

Solar Carport – Double Rows (EW-Side)

➤ **DESIGN CRITERIA**

Wind Load: 30m/s~55m/s

Snow Load: 0.5KN-1.5KN

Solar Panel: 1650x992mm 6x16 Portrait

Layout : 2X12 cars

➤ **BASIC PARAMETER**

Material: Q235 hot dip galvanizing

Coating over 65um.

Fastener: Stainless steel SS304

Water Proof: Aluminum 6063-T5, EPDM

Tilt Angle: 5~15 degree

Lowest height H: 2.5 m

Width of space: L1 2.5~3m

Length of space: L2 6m

➤ **STYLE**

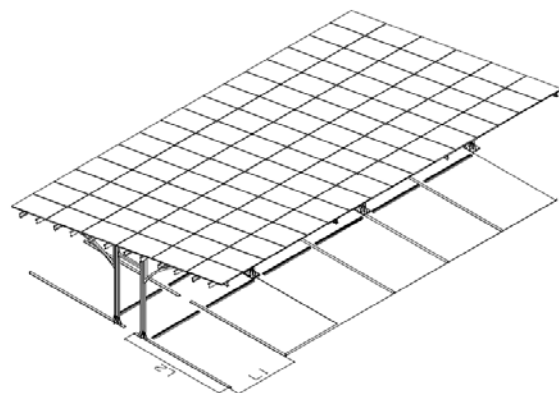
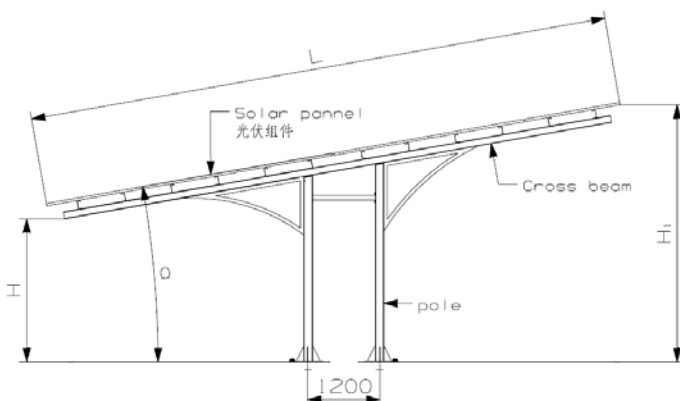
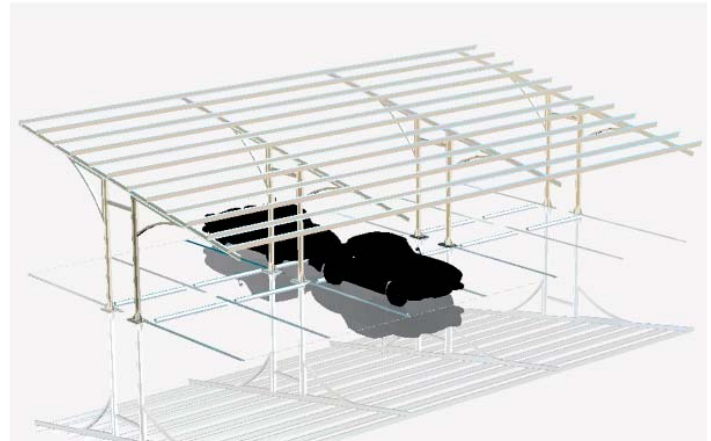
Double Row Carport

North-south Vehicle parking

Suitable for Car, Van and SUV

➤ **CHARACTERISTIC**

1. Keep away from wind and rain
2. Vehicle charge station
3. Power supply to LED light, advertizing Board etc.
4. Sell clean energy to grid,



Room 1005, No. 939 JinQiao Road, Pudong, Shanghai China 200136

Tel: 0086 21 61600231/61600232/61600233

www.frontierack.com